



QUANTUM VS
Next Generation Software

myViewpoint Release 1.0.9

**Transmittal Document including
New Features & Upgraded Functions**



Important Information

Publication No. 65-30001-05A

May 2005

1st Edition



1st Edition, May 2005

It is the policy of **Electronic Data Processing PLC**, to improve products as new technology, components, software and firmware become available. **Electronic Data Processing PLC**, reserve the right to change specifications without prior notice. All software products are licenced to users under the terms of the **Electronic Data Processing PLC** Program Products Licence Agreement.

All features, functions, and operations described herein may not be marketed by **Electronic Data Processing PLC**, in all parts of the world.

Copyright Notice

This document contains information which is proprietary to **Electronic Data Processing PLC**. Reproduction of this document for any purpose is prohibited without the prior express written authorisation of **Electronic Data Processing PLC**.

Disclaimer

Electronic Data Processing PLC, makes no representation and no expressed or implied warranty of any kind with the regard to the documentation for any particular purpose. Whilst every effort has been made to ensure the accuracy of the documentation **Electronic Data Processing PLC**, accept no liability for any losses or consequential damages arising directly or indirectly from the use of the documentation.

Electronic Data Processing PLC, reserve the right to amend this documentation without obligation to notify any person or organisation of any such amendments.

© 2005 ELECTRONIC DATA PROCESSING PLC.

Contents

MYVIEWPOINT RELEASE 1.0.9 OVERVIEW	2
<i>Operational Considerations</i>	<i>2</i>
<i>Important client information</i>	<i>3</i>
PRODUCT ENHANCEMENTS	4
<i>Query Column Heading Title Wrapping</i>	<i>4</i>
<i>Query Totals Manipulation</i>	<i>5</i>
<i>Saving Graphical Output Properties</i>	<i>6</i>
<i>Graph Scroll Bars</i>	<i>7</i>
<i>Fit To Size</i>	<i>8</i>
<i>Output Field Tab Interface</i>	<i>8</i>
<i>Confirm Cancel</i>	<i>9</i>
<i>Output Field Properties</i>	<i>9</i>
<i>Automatic SSelect</i>	<i>9</i>
<i>User Profile Security</i>	<i>10</i>
<i>Automatic Detection of Multi Value Data</i>	<i>10</i>
<i>Query Cancellation</i>	<i>10</i>
<i>Drill-Down via Graphical Hotspots</i>	<i>11</i>
<i>DBMS Connectivity Testing</i>	<i>11</i>
<i>Query Filtering Criteria</i>	<i>12</i>
PLANNED RELEASE 1.0.10 ENHANCEMENTS	13
<i>'Break-On' on any query column</i>	<i>13</i>
<i>In-Query Search Facility</i>	<i>13</i>
<i>Off-Line Reporting</i>	<i>13</i>
<i>Report Scheduler</i>	<i>13</i>
<i>Query Preview</i>	<i>13</i>
<i>Global Metrics Manager</i>	<i>13</i>
<i>Average or Mean Totals</i>	<i>14</i>
<i>File Linker</i>	<i>14</i>
<i>IBM Java</i>	<i>14</i>

myViewpoint Release 1.0.9 Overview

The EDP Group is pleased to announce the General Customer Availability (GCA) of myViewpoint Release 1.0.9.

myViewpoint Release 1.0.9 relies upon a Personal Computer running Windows™ 2000 or XP connecting to a Multi-Value database and may be used in conjunction with any of the following:

- **IBM U2 Universe**
- **IBM U2 Unidata**
- **Objectware UniVision**
- **Pick Systems D3**

New product features include the ability to position total & sub total lines at the head of a query, multi-line column heading title wrapping, confirmation message consistency, improved security, auto detection of sort select, user definable input field prompts, the saving of graphical output properties, automatic presentation of multi value data and DBMS connectivity message consistency.

myViewpoint 1.0.9 is a high performance, integrated and feature rich software toolset, specifically designed and developed to meet the operational business intelligence and decision support needs of *any* business.

Operational Considerations

Before upgrading to Quantum VS myViewpoint Release 1.0.9, it is advisable to consider the impact upon your business. Sensible upgrade timing should be planned. Before commencing the upgrade a backup of your existing business intelligence queries should be made. This upgrade runs automatically with no user intervention required and takes only a few minutes.

Important client information

The EDP Group operates an ongoing Value Added Research & Development Program for Quantum VS myViewpoint.

Before completing any product upgrade users are advised to read the relevant product Transmittal Document.

Product Enhancements

The EDP Group is introducing enhancements within the myViewpoint Release 1.0.9 Software Product.

These product enhancements include:

Query Column Heading Title Wrapping

The enhancement permits the user to wrap the description text in a column heading, making it more meaningful. Customisable query column widths have also been added to help manage the overall 'look & feel' and usability of queries.

Output Field Criteria

Properties | Constraints | Trends

Field Properties

Choose output field by:

Dictionary Name: ANYL-DES-1 Attribute no: 1

Default heading: Des 1

Override column heading? Heading text: Rep Name

Use explicit column width? Column width: 7 Reset column width to default

Use specific multi values? Individual

Display output field?

Alignment: Left

Field data type: Alphanumeric Displayed as: N/A Stored as: N/A

Example output: Blank when zero

Link query? Set link query

Column font: dialog 12pt

Negative colour: black

Show column totals?

Ok Cancel

Top 5 Reps by YTD Profit (No. of Rows - 11) (Last Run - 17/05/2005 15:...

Rep Name	Profit Year To Date	Year To Date Profit Percentage	Year To Date Sales	Last Year Sales
**	3,449.22	276.01	6,254.38	62,518.63
**	706.25	47.05	1,500.75	13,903.68
Asif Mustah...	706.25	47.05	1,500.75	13,903.68
**	721.86	58.24	1,239.36	13,474.53
Charles Me...	721.86	58.24	1,239.36	13,474.53
**	461.13	54.25	849.88	11,781.20
Mike Cox	461.13	Warning constraint - Less Than "55"		11,781.20
**	657.58	55.44	1,185.96	12,222.86

Query Totals Manipulation

The enhancement permits the user the choice of displaying query Totals and Sub Totals at the top of the query. This is particularly useful when there are many rows of data. In these circumstances needing to scroll to the foot of a query to view totals is not user friendly.

Sub Totals

1st Break on A-STKL-PG Subtotal on All Add break

Only show totals

Totals at Top

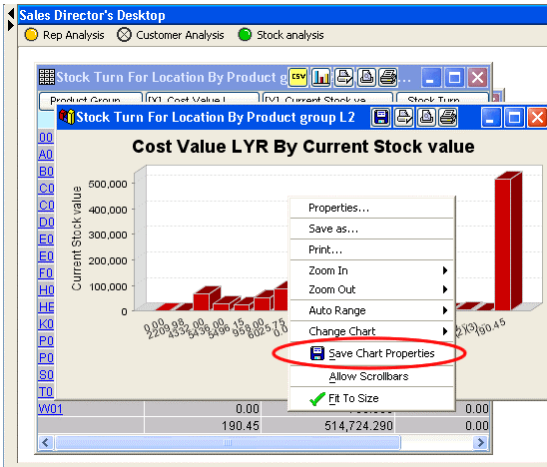
Ok Cancel

Stock Turn For Location By Product g

Product Group	Cost Value LYR	Current Stock value	Stock Turn
TOTALS	35,267.58	868,115.192	0.04
D01	0.00	0.000	0.00
A01	2,209.98	1,831.620	1.21
B01	4,332.00	65,952.800	0.06
C01	5,436.00	29,359.764	0.19
C02	5,496.15	22,988.750	0.24
D01	958.00	53,958.251	0.01
E01	6,025.75	85,467.264	0.07
E02	0.00	1,320.890	0.00
F01	3,718.94	45,166.132	0.08
H01	0.00	780.236	0.00
HB1	0.00	2,282.000	0.00
K01	0.00	5,690.500	0.00
P01	2,829.31	25,624.200	0.11
P02	4,071.00	4,555.800	0.89
S01	0.00	1,624.000	0.00
T01	0.00	6,019.795	0.00
W01	0.00	768.900	0.00
	190.45	514,724.290	0.00

Saving Graphical Output Properties

This enhancement enables graph properties to be saved. The feature also permits more than one graph per query to be opened, enabling the user to toggle between the graphs and the query.



Save Graph Properties Name

Enter graph properties name: Clear

Ok Cancel

Saved

Chart properties saved successfully.

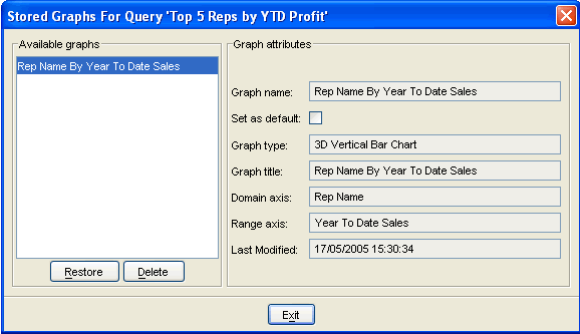
OK

Restoring a graph:

Choose Chart Selection

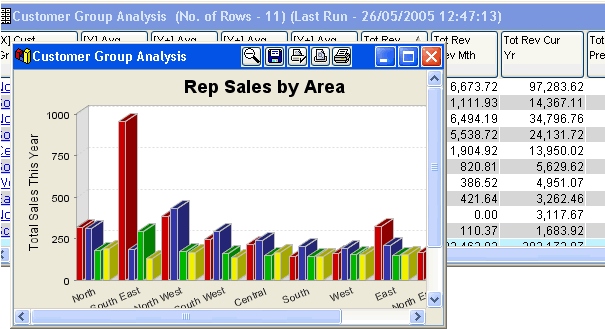
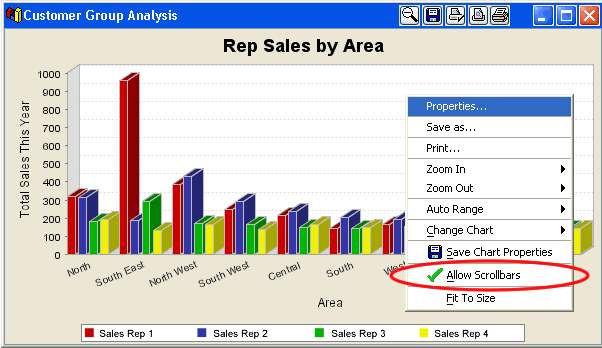
Restore a chart.
 Create a new chart.

OK Cancel



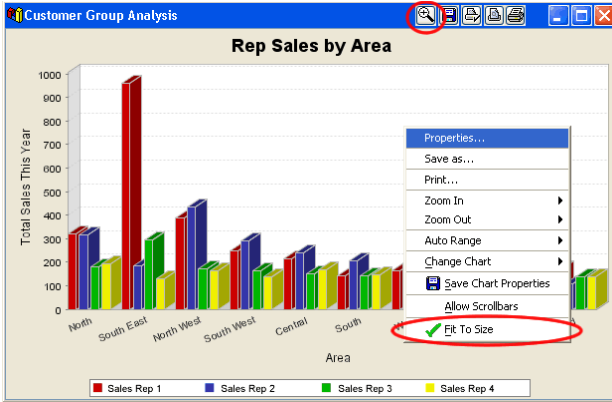
Graph Scroll Bars

This enhancement permits the user to invoke vertical and horizontal scrollbars in graphical output. This is applicable when the graphical output cannot be displayed in the selected window and is invoked by the user at runtime.



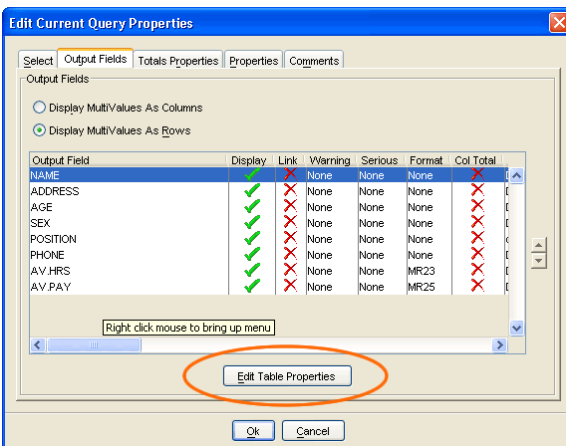
Fit To Size

This enhancement will re-size the currently selected graph to fit in the available window. This option is invoked by either clicking the 'spyglass' icon in the toolbar, or by a 'right-mouse' click on the selected graph which displays the menu option.



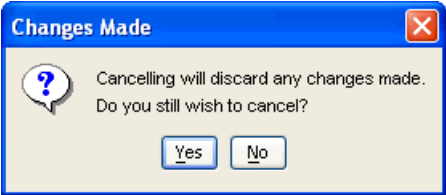
Output Field Tab Interface

The enhancement to the user interface now incorporates a button to access the table properties in the 'Output Fields' tab, eliminating the need to right click.



Confirm Cancel

The enhancement presents a 'Confirm Cancel' message when selecting the cancel option during creation or modification of a query.



Output Field Properties

The enhancement provides the user with an 'at-a-glance' view of query output field properties. Bold icons or descriptive text are used to display the setting of each field property in the query.

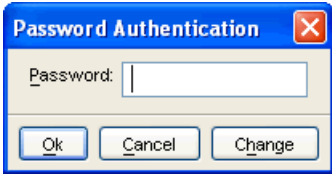
Output Field	Display	Link	Warning	Serious	Format	Col Total
ASSTL_LPS		✗	None	None	None	✗
STKL-STOCKNO	✓	✗	None	None	None	✗
STK-CV-LYR	✓	✗	None	None	MR2	✗
STK-REC-VALUE1234	✓	✗	None	None	MR3	✗
CALC-1 - Stock Turn	✓	✗	None	None	MR2	✗

Automatic SSelect

myViewpoint now automatically determines Sort Select.

User Profile Security

The feature adds a security password to the myViewpoint profiles manager. Each time the profile manager is accessed a password must be entered by the user.

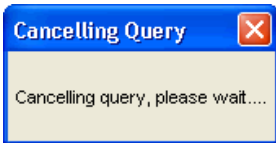
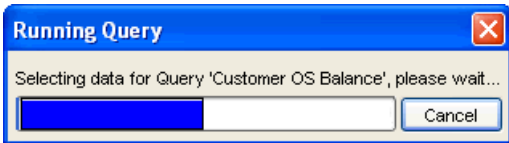


Automatic Detection of Multi Value Data

The feature automatically detects Multi Value Data and removes the multi value number from the column heading description in the query output.

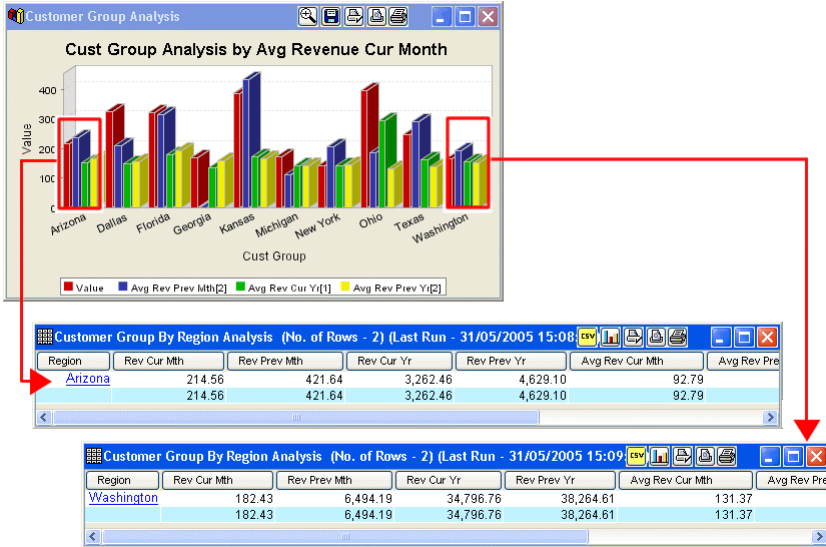
Query Cancellation

The feature is now operative and cancels a running query when actioned.



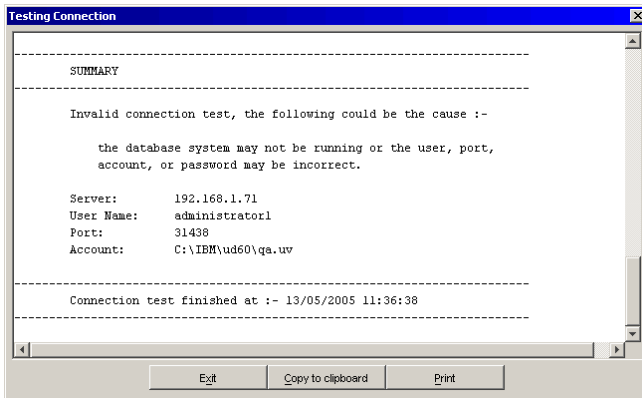
Drill-Down via Graphical Hotspots

Embedded 'hotspots' within a graph, enables the user to click and drill-down to underlying data.



DBMS Connectivity Testing

myViewpoint now displays generic connectivity messages when connecting.



Query Filtering Criteria

The feature permits the myViewpoint Professional User to assign a meaningful name to an input field. When the input dialogue box is presented to the myViewpoint Standard User, that user is now understandably informed what input data is required.

Create Select Statement

Select statement: :S > "0" OR WMTH ANYL-TYPE = "REP" AND WMTH ANYL-LYR-SALES > "0" AND WMTH ANYL-DES-1

Create Select Statement

Select Dictionary Item
Select Dictionary Item To Use

Dictionary item: ANYL-DES-1

Dictionary item description: Des 1

Screen prompt: Enter REP Name

<< Back Next >> Cancel Finish

Query Prompt For...

'Top 5 Reps by YTD Profit'

Enter REP Name

Ok Cancel

Planned Release 1.0.10 Enhancements

In this section we detail a small selection of planned feature enhancements. However, these are subject to change.

'Break-On' on any query column

Currently the break-on facility is only available on the first column in a query. Development is planned to expand this feature so that a break-on can be used on any column in the query.

In-Query Search Facility

This feature will permit the myViewpoint user to search the data in the displayed query.

Off-Line Reporting

This feature will permit the user to save query data to the local desktop and re-display the query off-line.

Report Scheduler

This feature will enable the user to schedule the automatic execution of myViewpoint functions.

Query Preview

This enhancement will permit the user to preview a query format whilst it is being created or modified.

Global Metrics Manager

A Global Metrics Manager which permits the definition, review, and modification of business metrics used in myViewpoint query generation will be incorporated, enabling complex business wide metrics to be managed effectively.

Average or Mean Totals

The facility to display Average or Mean Totals together with Totals and Sub Totals in query output will be incorporated.

File Linker

Facilities will be incorporated to link Multi Value files.

IBM Java

The myViewpoint product is to be ported to IBM's implementation of Java and the RedHat Linux desktop.

Further Information

If further information is required on future product enhancements please do not hesitate to email asifm@bml.uk.com or contact EDP Marketing:

Mark Jowitt
Electronic Data Processing PLC
Beauchief Hall
Beauchief
Sheffield
S8 7BA

Tel: 0114 262 2032
e-mail: markj@edp.fastfreenet.com

<http://www.edp.co.uk>

International Offices

SCOTLAND

Douglas House
Avondale Campus, Pochard Way
Strathclyde Business Park
Lanarkshire
Bellshill, ML4 3HB
Telephone: 01698 842425
Fax: 01698 845166

NORTH

Beauchief Hall
Beauchief
Sheffield S8 7BA
Telephone: 0114 262 1621
Fax: 0114 262 1126

SOUTH MIDLANDS

Sunrise Parkway
Linford Wood
Milton Keynes MK14 6LJ
Telephone: 01908 665522
Fax: 01908 249798

BML (OFFICE COMPUTERS) LIMITED

Maypole House
Maypole Road
East Grinstead
West Sussex
RH19 1HU
Telephone: 01342 313141
Fax: 01342 313181
www.edp.fastfreenet.com

The Barns
Stretton Road
Stretton
Warrington
Cheshire WA4 4NP
Telephone: 01925 732300
Fax: 01925 730828

DISYS ASSOCIATES LIMITED

Sunrise Parkway
Linford Wood
Milton Keynes
MK14 6LJ
Telephone: 01908 665522
Fax: 01908 249798
www.disys.uk.com

The Barns
Stretton Road
Stretton
Warrington
Cheshire WA4 4NP
Telephone: 01925 732300
Fax: 01925 730828

BCT SOFTWARE SOLUTIONS LIMITED

The Barns, Stretton Road
Stretton, Warrington
Cheshire WA4 4NP
Telephone: 01925 732300
Fax: 01925 730828
www.bct-solutions.co.uk

Douglas House
Avondale Campus, Pochard Way
Strathclyde Business Park
Bellshill, Lanarkshire, ML4 3HB
Telephone: 01698 842425
Fax: 01698 845166



GROUP HEADQUARTERS (RESEARCH & DEVELOPMENT CAMPUS)

Beauchief Hall, Beauchief, Sheffield S8 7BA
Telephone: 0114 262 1621 Fax: 0114 262 1126
Website: www.edp.fastfreenet.com